



Take a wander on the beach

The

# A Family Fun Break in... Isle of Sheppey

## Kent's Treasure Island

This Country Break explores the **Isle of Sheppey**, one of England's few true islands, sited at the mouths of the Thames and the Medway and cut off from the rest of Kent by the tidal channel and estuary known as the Swale.

At just 36 square miles the island packs a lot in, from the miles of beaches (perfect for lazing on or getting wet from), its acres of low-lying marshes making it one of the best places in UK to see birds of prey, to its renowned fossil beds which provide regular prehistoric finds.

Scratch a little beneath the surface and you'll also discover more history and heritage per square mile than just about anywhere else in the country. Uncover the strong maritime tradition, stand on the same soil as Saxon Queens, Dutch Invaders and famous writers, and for the piece-de-résistance visit the site of the birthplace of UK aviation.

So forget what you think you know about Sheppey and come and take a fresh look, you're sure to find something surprising!



**KENT**  
GARDEN of ENGLAND  
visitkent.co.uk

Welcome to the **ISLE of SHEPPEY**

Island of Treasures waiting to be Discovered !

Map locations: BISH TOWNS, SHEPPEY, BARKERS POINT, QUENBOROUGH, MINSTER, EASTCHURCH, WARDEN, LEYDOWN, HAKTY.

Events:
 

- Fun for all: Sun 24th, 2012 - A fun day with teams taking part in all games.
- General: Historic Summer Fete: Jul 29th, 2012 - Sheppey Historic Ground, Medfords - annual event to raise funds for all local charities.
- Special: New Season The Summer: Jul 4th, 2012 - 4pm

Advertisements:
 

- Mulberry Environmental Management Systems
- Big Fish Arts

Find out more at [www.visitsheppey.com](http://www.visitsheppey.com)

# Family Fun...

Sheppey has always been a family destination and there are no shortage of traditional activities to keep the children – and adults – happy for hours, but there are also plenty of opportunities to explore a bit further and try some more unusual experiences!

These are just a few ideas so feel free to mix it up or swap them around, combine with any events that are on in the area (remember to check local websites and magazines) and in short make it an experience of your own. Do be sure to note those activities that need to be booked in advance.

Speaking of which, why not book a **Sheppey Greeter** to get things off to a good start? These are volunteers full of useful local knowledge to help you get even more from your day.



## Further Information

[www.visitsheppey.com](http://www.visitsheppey.com)

[www.visit.swale.gov.uk](http://www.visit.swale.gov.uk)

[www.visitkent.co.uk](http://www.visitkent.co.uk)

[www.visitkent.co.uk/greeters/](http://www.visitkent.co.uk/greeters/)

[www.kent.gov.uk/explorekent](http://www.kent.gov.uk/explorekent)

[www.travelinesoutheast.org.uk](http://www.travelinesoutheast.org.uk)

[www.southeasternrailway.co.uk](http://www.southeasternrailway.co.uk)

[www.ruralkent.org.uk/swailrail.htm](http://www.ruralkent.org.uk/swailrail.htm)

Contains Ordnance Survey Data © Crown Copyright and Database Right 2011



## Getting There

The Isle of Sheppey is easily reached via the **Sheppey Crossing** (A249) from the M2 and the A2 at Sittingbourne.

Several bus routes cross the island linking to Maidstone, Canterbury and the rest of Kent. **See the map.**

Trains operated by **South Eastern** call at Sheerness and Queenborough, with connections to Kent, London and points beyond.



## Getting Started...

Remember those childhood days out to the seaside?

Take a trip down memory lane, and get started with a nostalgic jolly full of beaches, amusements and ice-cream on **page 3.**



# Party

## like its 1979...

### Old-fashioned family fun at the seaside

Are you pining for a good old-fashioned day at the seaside? Well Sheppey won't disappoint, it's been a chosen beach getaway for Londoners for decades and exhibits all the great things you'll remember from childhood seaside holidays. So why not pass on the tradition and take the family for a nostalgic day out in **Leysdown-on-Sea**?

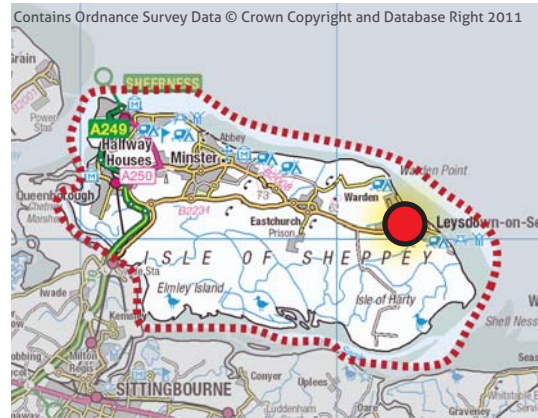
Choose to spend the morning in traditional seaside resort fashion by trying to win some ice cream money in one of the amusement arcades. Or if you prefer to play in the fresh air, have a family pitch and putt tournament at **Shellness Golf** or visit nearby **Leysdown Coastal Park**, where you'll also find a play area and plenty of open space to fly a kite. If sand is a key draw for you then you'll be in good hands, as the beach stretches for several miles and with shallow water and lifeguards on duty in summer it's a good spot for families to sunbathe, swim, search for shells or build sandcastles.

When you've built up an appetite for lunch there are plenty of options in **Leysdown**, but this wouldn't be a seaside jaunt if you didn't plump for something traditional so we'd suggest a burger and fresh doughnuts. You can also stock up on seaside favourites like rock and sweets at the **Drug Store** on the Promenade.



In the afternoon you'll need to work all that off with a walk along the beach to the hamlet of Shellness at the Eastern end of the **Swale National Nature Reserve**. The walk is just over a mile along unspoilt beaches where you may see rare butterflies and many species of wading and other seabirds (you'll also pass a naturist beach before you reach Shellness). On the way back you can stop for an ice-cream at the **Retreat Cafe** or a drink at the Grade 2 listed **Muswell Manor** (the birthplace of British Aviation) on Shellness Road.

In the evening, end your traditional seaside day with Fish and Chips in **Leysdown** (there's no shortage of options) and, if you've still got the energy for a night out, head to **Merlin's Cabaret** on Leysdown Road for comedy, music or even pig racing!



## Getting There

From the Sheppey Crossing take the A2500 Lower/Leysdown Road across the island.

Several bus routes cross the island to **Leysdown**, with buses on route **360** being your best bet. See the map.

The nearest train stations are at Queenborough and Sheerness, in the west of the island, handy also on route **360**.

## Further Information

[www.visitsheppey.com](http://www.visitsheppey.com)

[www.visit.swale.gov.uk](http://www.visit.swale.gov.uk)

[www.kent.gov.uk/explorekent](http://www.kent.gov.uk/explorekent)

[www.leysdownonsea.com](http://www.leysdownonsea.com)

[www.kent.gov.uk](http://www.kent.gov.uk)

[www.goodbeachguide.co.uk](http://www.goodbeachguide.co.uk)

[www.naturalengland.org.uk](http://www.naturalengland.org.uk)

[www.muswellmanor.co.uk](http://www.muswellmanor.co.uk)

[www.merlinsentertainment.co.uk](http://www.merlinsentertainment.co.uk)



## Extending your break...

Need something more engaging to occupy the little ones?

Head to **page 5** to get out in the fresh air and become Nature Detectives!



Isle of Harty Trail

# Nature detectives

## Fascinating things for enquiring minds

Sheppey is well-known for its extraordinary birdlife and extensive nature reserves. There's plenty for children to get excited about as well as more seasoned wildlife watchers. This naturalists day out can easily be done without a car by following the **Isle of Harty Cycle Route**.

Start your day in **Leysdown** and follow the route past **Muswell Manor** and onto what the RSPB have called 'perhaps the best bird of prey viewpoint in the UK' at the **Capel Fleet Raptor Viewpoint**. Challenge the family to spot as many birds, insects and animals as they can on the trip through farmland and marshes, especially watching out for the resident population of Marsh Harriers.

The **Harty Ferry Road** feels a world away from Sheppey's beaches and the peaceful atmosphere is a great opportunity to spot other wildlife like; hares, weasels and field mice, as well as farm animals. You can contact one of the **Sheppey Greeters** in advance to find a knowledgeable local guide or simply take along some binoculars and see what you can spot.

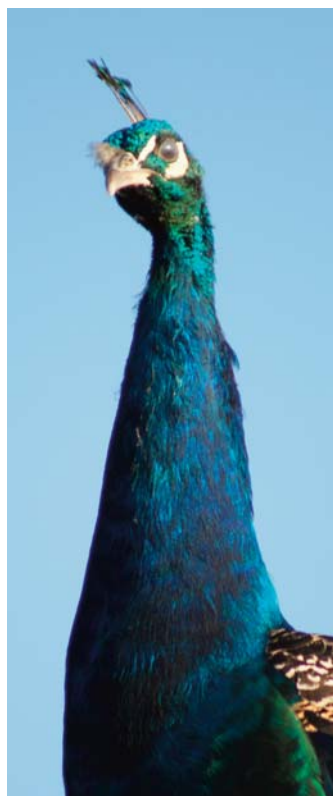
Top wildlife spotters will deserve a good lunch. Happily this can be found at the nearby **Ferry House Inn**, which offers locally produced food, including fish caught from the estuary nearby, has a children's menu and highchairs in the Bar area.



After lunch head east past the **Church of St. Thomas at Harty**, this is a great spot for views across the estuary and also home to some peacocks who you'll surely hear calling and you might even spot sunning themselves!

It's a short hike to the **Swale National Nature Reserve**, an important breeding ground for many rare birds such as the Marsh Harrier, short-eared owls and many waterfowl. Barn Owls and Montagu's harrier have been seen hunting at the reserve and rare butterflies and moths also make their home here. Take a walk around the reserve, which is flat terrain, the full circuit is about 6 miles ([click here for details](#)). There are information boards at the reserve and leaflets available to help you identify what you see.

Packed full of wildlife experiences its time to head onto **Leysdown** for a Fish and Chip supper and for those with energy left be sure to check with **Big Fish Arts** to see if you can catch a performance from the Big Fish Band!



### Further Information

[www.visitsheppey.com](http://www.visitsheppey.com)

[www.visit.swale.gov.uk](http://www.visit.swale.gov.uk)

[www.kent.gov.uk/explorekent](http://www.kent.gov.uk/explorekent)

Isle of Harty Trail

[www.rspb.org.uk/marshharrier](http://www.rspb.org.uk/marshharrier)

[www.visitkent.co.uk/greeters/](http://www.visitkent.co.uk/greeters/)

[www.theferryhouseinn.co.uk](http://www.theferryhouseinn.co.uk)

[www.hartychurch.org.uk](http://www.hartychurch.org.uk)

[www.naturalengland.org.uk](http://www.naturalengland.org.uk)

[www.bigfish.org.uk](http://www.bigfish.org.uk)

Contains Ordnance Survey Data © Crown Copyright and Database Right 2011



### Getting There

From the Sheppey Crossing take the A250 Lower/Leysdown Road across the island.

Several bus routes cross the island to **Leysdown**, with buses on route **360** being your best bet. See the map.

The nearest train stations are at Queenborough and Sheerness, in the west of the island, handy also on route **360**.



### Extending your break...

Too much bird watching?

There's plenty more to Sheppey, including some really fascinating heritage, so head to **page 7** to become History Hounds!



View from Minster Gatehouse Museum

# History Hounds

Indiana Jones had to start somewhere...

There are some great activities on Sheppey to really bring history alive for children. From gargoyle prints to ghost walks, the heritage of Sheppey is far from booooring!

Start your historical discovery day at **Minster Abbey Gatehouse Museum**. There are fantastic views over Sheppey and beyond from this highest point on the island so it's a good starting point to get your bearings. Both the **Abbey** and the museum are open to the public in the afternoons in summer and at limited times during the rest of the years (check the websites for details). The ancient buildings, including features like pilgrim crosses on the Norman doorways will fascinate children, and the museum offers a history of Sheppey from fossils to World War 2. There are regular children's events held at the museum, details on their website.

Next, travel a couple of miles down the road to Harty to visit the Norman **Church of St Thomas the Apostle**. The Church is open from 9-5 and if you've made arrangements with a **Sheppey Greeter** then children can try brass rubbings or gargoyle foil prints. Lunch at the **Ferry House Inn** nearby lets you taste local produce from sea or field and a children's menu is available in the Bar (note, the more formal restaurant does not allow under 10s).



Minster Gatehouse Museum

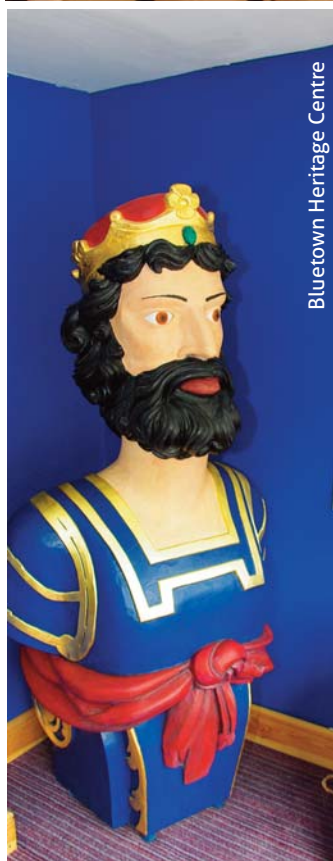


Harty Church

In the afternoon, head west to Queenborough which offers the **Guildhall Museum**, telling the story of the town's evolution from a small Saxon settlement to a wealthy borough with a Royal Castle built by Edward III (including a working cell for those caught misbehaving!). You can visit the site of **Queenborough Castle**, now a public park with a play area (useful for excess energy) and stop off for a cup of tea at **Castle Connections** and check out the finds from the recent archaeological dig. Queenborough also has some fascinating tombs and headstones in the crowded churchyard of its **Holy Trinity Church**.

End your Island heritage trail with a visit to the excellent **Blue Town Heritage Centre**, where it's not just all displays, they often have children's activities, show films in the old theatre hall and can arrange guided walks too! Afterwards hit **Sheerness** for dinner in one of its many cafes, pubs or restaurants. For those not tucked up in bed, the **Big Fish Arts** group can provide a spooky guided ghost walk around Town, not for the faint hearted!

Queenborough Guildhall Museum



Bluetown Heritage Centre

### Further Information

[www.visitsheppey.com](http://www.visitsheppey.com)

[www.visit.swale.gov.uk](http://www.visit.swale.gov.uk)

[www.minstergatehousemuseum.info](http://www.minstergatehousemuseum.info)

[www.minsterabbey.org.uk/3.html](http://www.minsterabbey.org.uk/3.html)

[www.hartychurch.org.uk](http://www.hartychurch.org.uk)

[www.visitkent.co.uk/greeters/](http://www.visitkent.co.uk/greeters/)

[www.theferryhouseinn.co.uk](http://www.theferryhouseinn.co.uk)

[www.sheppeywebsite.co.uk](http://www.sheppeywebsite.co.uk)

[www.bluetownheritagecentre.com](http://www.bluetownheritagecentre.com)

[www.bigfish.org.uk](http://www.bigfish.org.uk)

Contains Ordnance Survey Data © Crown Copyright and Database Right 2011



### Getting There

**Minster** is a short drive from Sheerness either along the seafront or by following the **A250/B2008** from Halfway.

Several bus routes stop at Minster, with route **367** and route **360/362** being your best bet. See the map.

The nearest station is at Sheerness where you can pick up the **367** or the **360/362**.



### Extending your break...

Looking for fun for all the family and all in one place?

Dive onto **page 9** to plan your day at Barton's Point Coastal Park, there really is something for everyone!





Watersports at Barton's Point

# Fun for all the family

Barton's Point Coastal Park has it all...

**Barton's Point Coastal Park**, on the edge of Sheerness offers 31 hectares of activities that all ages can enjoy, whether its adrenaline fuelled action or more sedate exploring.

Have a watery wildlife morning seeing what you can find in the lake or down at the nearby beach using fishing net or a line and bait (all available to buy locally). Children should be able to fill their buckets with crabs, fish and pond creatures, all to be returned to their natural habitat afterwards of course! For more serious anglers, equipment can be bought in Sheerness at **EML Angling** or **M&L Tackle** and the nearby beach at **Barton's Point** is a popular spot for flat fish, bass and even cod.

Make sure you bring the binoculars and a bird book as there are many species to be spotted on the lake with flocks of Oyster Catchers and various Sandpipers seen commonly. Birds of prey are also frequently seen overhead and near the cliffs around Minster, together with Harriers that can sometimes be seen skimming across the fields at Barton's Point.

For the more sedate avian experience there are plenty of swans and ducks to be fed on the lake before lunch at the **Boat House Cafe**, which offers homemade food, cream teas and Sunday lunches.



In the afternoon try to choose between some of the many popular activities for children and adults at the Park: there's a new Pirate play area, a model steam railway allowing children, pitch and putt course and a boating lake for canoeing, pedal boats or kayaking (oh and there's also aqua zorbing for adrenaline junkies!)

If you feel the need to spread your wings and get out of the sun then why not head a mile or so down the coast and stop by the **Sheppey Little Theatre**? Their programme includes shows, concerts, magic and far more than you'd expect (check the website to see what's on).

You may well want to spend another day here to fit everything in, so why not spend the night at the **Barton's Point Campsite**? The site overlooks the lake and offers the chance to watch the local avian residents at sunrise. If you've managed to catch something good to eat earlier in the day, put it on the barbeque, otherwise head to **Sheerness** or **Queenborough** (for **Captain Crimps**) for supplies.



### Further Information

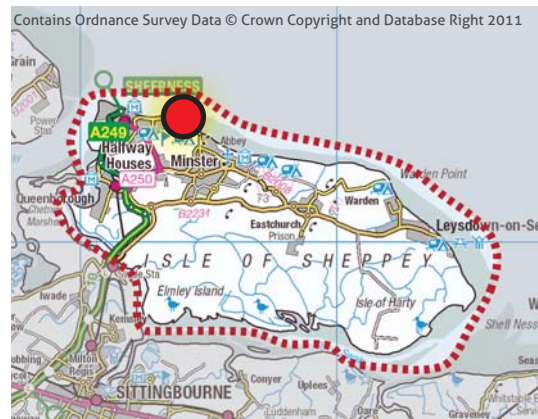
[www.visitsheppey.com](http://www.visitsheppey.com)

[www.visit.swale.gov.uk](http://www.visit.swale.gov.uk)

[www.bartonspointcoastalpark.co.uk](http://www.bartonspointcoastalpark.co.uk)

[www.emlangling.co.uk](http://www.emlangling.co.uk)

[www.sheppeylittletheatre.org](http://www.sheppeylittletheatre.org)



### Getting There

**Sheerness** is easily reached from the Sheppey Crossing following the A249 Brielle Way.

Several bus routes stop along Marine Parade, with route **367** being your best bet. See the map.

The nearest station is at **Sheerness-on-sea** about a mile away where you can pick up the **367**.



### Extending your break...

Need something more educational?

No problem! Discover all about the Birds and the Bees (literally) on **page 11!**



The

# birds & the bees

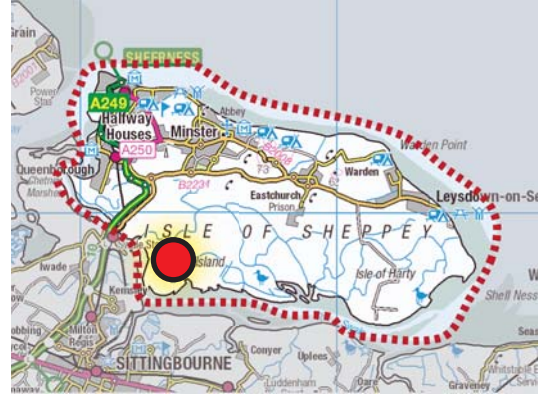
Evolution in action...

Birds, bees and evolution all in one day! Take in some of Sheppey's most fascinating natural sites on a day of adventure and discovery around the island.

Start your adventure at the **RSPB's Elmley Marshes Reserve**. Your adventure starts with a 2 mile drive across the flat marshes of the reserve, wonderfully the marshes here are packed with wildlife so keep your eyes peeled! On the reserve itself there are two nature trails and its a good walk between the reserve's 5 hides to spot harriers, short-eared owls and thousands of wading birds like the elegant avocet with its amazing sickle shaped beak. The Marshes are an important breeding ground in spring and early summer while autumn and winter sees thousands of migrating birds. At Capel Fleet, a few miles drive away, is the **Raptor Viewpoint**, which the RSPB call 'perhaps the best bird of prey viewpoint in the UK'. Children of all ages will be fascinated to spot Harriers and Buzzards hunting over the marshes.

Now onto the bees! For lunch **Flynn's Bee Farm** makes a fascinating stopping point. The tea room serves lunches as well as their famous honey cream tea and while there you can try all 8 varieties of honey they blend and learn all about apiculture and the many other products produced by the bees on the farm (if you visit in summer they have observation hives so you can get close and personal with the bees at work).



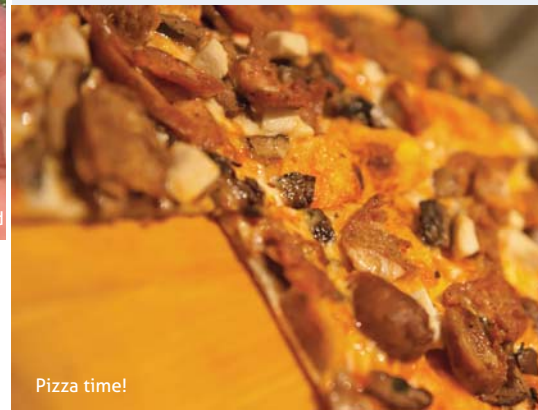


### Getting There

**Elmley Marshes** is easily reached via the Sheppey Crossing (A249) from the M2 and the A2 at Sittingbourne.

Several bus routes cross the island with the nearest stop being **Queenborough**. See the map.

The nearest station is **Swale Halt**, just over the Kingsferry Bridge, but trains also stop at **Queenborough**.



Pizza time!

### Extending your break...

Rain spoiling play?

Never fear, we've got plenty of suggestions for a day of inclement weather, just grab your brolly and head onto **page 13**.

It's an afternoon learning about the origins of life over at Minster-on-Sea; get yourself oriented at the **Minster Abbey Gatehouse Museum** and particularly with its displays of fossils (as well as human history). Its also worth the climb up the spiral stairs for the views from the roof, and do make sure to find the picture of Icarus II (the evolution defying pig that flew with he pioneers of aviation!).

Back to the fossils! Now you know what they look like, become a fossil hunter yourself by heading down to the beach at **Minster Leas** and take a stroll eastwards towards the cliffs. Here the London Clay geology is famous among fossil hunters for the quantity and quality of fossils to be found. Low tide is best and particularly keep a sharp eye out for sharks teeth, fossilised turtles and snakes, not forgetting the mud and the incoming tide!

At the end of this day of adventure and learning, there's one final skill to master. Head over to the **Shurland Hotel** in Eastchurch for a great pizza from their wood-fired oven. If you're there between 3.30 and 5.30 Tuesday to Friday kids can make (and then of course eat), their own pizza, from scratch. Booking is essential for this activity.



Fossiling image © Roy Shepherd



### Further Information

[www.visitsheppey.com](http://www.visitsheppey.com)

[www.visit.swale.gov.uk](http://www.visit.swale.gov.uk)

[www.rspb.org.uk](http://www.rspb.org.uk)

[www.flynnsbeefarm.co.uk](http://www.flynnsbeefarm.co.uk)

[www.discoveringfossils.co.uk](http://www.discoveringfossils.co.uk)

[www.sheppeyfossils.com](http://www.sheppeyfossils.com)

[www.minstergatehousemuseum.info](http://www.minstergatehousemuseum.info)

[www.theshurlandhotel.co.uk](http://www.theshurlandhotel.co.uk)



Cinema at Bluetown Heritage Centre

# Rainy Days...

## Staying ahead of the weather

Don't let the weather spoil your Sheppey experience, there's plenty to do for both you and the kids even if it's pouring outside!

Check out the **Blue Town Heritage Centre**, with its exhibitions, theatre hall and cinema (showing the latest films as well as heritage features), and activities for children. Afterwards take some time to stop by the **Sheerness Heritage Centre**, housed in a restored 19th Century Dockworkers cottage and featuring an exhibition on the dockyard and its workers.

If that's not enough there's plenty more options in Sheerness, you could head to the **Leisure Centre** for a dip in the pool, bowl a few frames at **Sheppey Bowl Ten pin bowling**, drop by the amusement arcades or even have a game or two at **Kings Bingo!** There's plenty of café's in **Sheerness** for lunch, just take a stroll down the High Street and take your pick.

After lunch take a drive to **Queenborough**, it's relatively compact so a visit to the **Guildhall Museum**, **Trinity Church** and **Castle Connections** for a coffee and a look round the local art, photographic and archaeological finds exhibition shouldn't see you get too wet!



Queenborough Guildhall Museum

The same can be said for **Minster** and a visit to the **Abbey Gatehouse Museum** or **Minster Abbey** itself will take an hour or so and provides a great way to get out of the rain and get immersed in Sheppey's history.

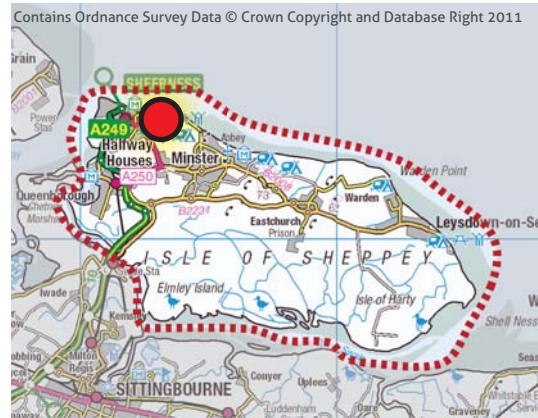
Of course rainy weather often means wind and waves, and a rainy day might well be the ideal time to sign up for that family lesson with **Minster Windsurf Academy**. With wetsuits on and the wind filling the sail, you'll never feel the rain anyway!

Afterwards take a drive across to **Leysdown-on-sea**, it might be a bit wet for just sitting on the beaches but there are plenty of **amusement arcades** to keep everyone happy for a few hours. If it's a weekend or a school holiday stop by **Muswell Manor** for a look at the aviation exhibition and sit down to a drink or dinner amongst the pioneers. To finish the day head back to **Leysdown** to **Merlin's** for an evening's entertainment or some live music at **Corrigan's**.



### Further Information

- [www.visitsheppey.com](http://www.visitsheppey.com)
- [www.visit.swale.gov.uk](http://www.visit.swale.gov.uk)
- [www.bluetownheritagecentre.com](http://www.bluetownheritagecentre.com)
- [www.sheernessheritagecentre.com](http://www.sheernessheritagecentre.com)
- [www.swaleleisure.com/sheppey](http://www.swaleleisure.com/sheppey)
- [www.kingsbingo.co.uk](http://www.kingsbingo.co.uk)
- [www.castleconnections.co.uk](http://www.castleconnections.co.uk)
- [www.minstergatehousemuseum.info](http://www.minstergatehousemuseum.info)
- [www.minsterwindsurfacademy.com](http://www.minsterwindsurfacademy.com)
- [www.muswellmanor.co.uk](http://www.muswellmanor.co.uk)
- [www.merlinsentertainment.co.uk](http://www.merlinsentertainment.co.uk)



### Getting There

Sheerness and **Bluetown** are easily reached from the Sheppey Crossing following the A249 Brielle Way.

Several bus routes run from Sheerness and provide links to Sittingbourne, Maidstone and Canterbury. See the map.

Sheerness station is situated at the top of the High Street, trains run via Queenborough to the rest of Kent and beyond.



### Extending your break...

Looking for something more active to do as a family?

We've got just the ticket, try our **active itineraries** for more adrenaline-fuelled action!

# More Information

## Listings & Details



Image © Roy Shepherd

### Attractions

Name	Telephone	Website	Address
Queenborough Castle Site	N/A	<a href="http://www.sheppeywebsite.co.uk/index.php?id=86">http://www.sheppeywebsite.co.uk/index.php?id=86</a>	Queenborough
Holy Trinity Church	01795 662648	<a href="http://www.kentchurches.info/church.asp?p=Queenborough">http://www.kentchurches.info/church.asp?p=Queenborough</a>	High Street, Queenborough, ME11 5EN
Queenborough Guildhall Museum	01795 667295	N/A	High Street, Queenborough, ME11 5AA
Bluetown Heritage Centre	01795 662981	<a href="http://www.bluetownheritage-centre.com">http://www.bluetownheritage-centre.com</a>	69 High Street, Bluetown, Sheerness, ME12 1RW
Minster Abbey	01795 879200	<a href="http://www.minsterabbey.org.uk/3.html">http://www.minsterabbey.org.uk/3.html</a>	High Street, Minster, ME12 3QD
Minster Abbey Gatehouse Museum	01795 875111	<a href="http://www.minstergatehouse-museum.info/index.php">http://www.minstergatehouse-museum.info/index.php</a>	Union Road, Minster-on-Sea, ME12 2HW
RSPB Elmley Marshes	01795 665969	<a href="http://www.rspb.org.uk/reserves/guide/e/elmleymarshes/">http://www.rspb.org.uk/reserves/guide/e/elmleymarshes/</a>	Kingshill Farm, Elmley, ME12 3RW
Muswell Manor	01795 510245	<a href="http://www.muswellmanor.co.uk">http://www.muswellmanor.co.uk</a>	Shellness Road, Leysdown-on-sea ME12 4RJ
Church of St.Thomas the Apostle	01795 875146	<a href="http://www.hartychurch.org.uk/">http://www.hartychurch.org.uk/</a>	Harty Ferry Road, Harty, ME12 4BQ
Swale National Nature Reserve	0845 600 3078	<a href="http://www.naturalengland.org.uk/ourwork/conservation/designatedareas/nnr/1006143.aspx">http://www.naturalengland.org.uk/ourwork/conservation/designatedareas/nnr/1006143.aspx</a>	Shellness Road, Shellness, ME12 4RJ
Leysdown Coastal Park	01795 417127	<a href="http://www.kent.gov.uk/leisure_and_culture/countryside_and_coast/parks_and_open_spaces/country_parks/leysdown_coastal_park.aspx">http://www.kent.gov.uk/leisure_and_culture/countryside_and_coast/parks_and_open_spaces/country_parks/leysdown_coastal_park.aspx</a>	Shellness Road, Shellness, ME12 4RJ

Name	Telephone	Website	Address
Flynn's Bee Farm	01795 874935	<a href="http://www.flynnsbeefarm.co.uk/">http://www.flynnsbeefarm.co.uk/</a>	Elmley Road, Brambledown, ME12 3SS
Sheerness Heritage Centre	01795 663317	<a href="http://www.sheernessheritage-centre.com/">http://www.sheernessheritage-centre.com/</a>	10 Rose Street, Sheerness, ME12 1AJ
Sheerness Leisure Centre	01795 534 541	<a href="http://www.greta1892.co.uk/">http://www.greta1892.co.uk/</a>	Whitstable Harbour, Whitstable, CT5 1AB
Merlin's Cabaret	01795 510210	<a href="http://www.merlinsentertainment.co.uk/">http://www.merlinsentertainment.co.uk/</a>	Leysdown Road, Leysdown, ME12 4RB
Shellness Golf	N/A	N/A	Shellness Road, Leysdown, ME12 4RJ
Sheppey Little Theatre	01795 665700	<a href="http://www.sheppeylittletheatre.org/">http://www.sheppeylittletheatre.org/</a>	Meyrick Road, Sheerness, ME12 2NX
Big Fish Arts	07775 712306	<a href="http://www.bigfish.org.uk">http://www.bigfish.org.uk</a>	N/A
RSPB Capel Fleet Raptor Viewpoint	01795 665969	<a href="http://www.rspb.org.uk/reserves/guide/e/elmleymarshes/">http://www.rspb.org.uk/reserves/guide/e/elmleymarshes/</a>	Harty Ferry Road, Harty, ME12 4BQ
Barton's Point Coastal Park	07909 994196	<a href="http://www.bartonspointcoastal-park.co.uk/">http://www.bartonspointcoastal-park.co.uk/</a>	Marine Parade, Sheerness, ME12 2BX
Sheppey Bowl Ten Pin Bowling	01795 662495	N/A	Bridge Road, Sheerness, ME12 1RH



# Family

Name	Telephone	Website	Address
Isle of Harty Trail	N/A	<a href="http://www.kent.gov.uk/leisure_and_culture/countryside_and_coast/cycling/cycle_routes/isle_of_harty_trail.aspx">http://www.kent.gov.uk/leisure_and_culture/countryside_and_coast/cycling/cycle_routes/isle_of_harty_trail.aspx</a>	Start on Leysdown Promenade
King's Bingo	01795 662733	<a href="http://www.kingsbingo.co.uk/">http://www.kingsbingo.co.uk/</a>	Broadway, Sheerness, ME12 1TP
Minster Windsurfing Academy	07713122068	<a href="http://www.minsterwindsurfingacademy.com/">http://www.minsterwindsurfingacademy.com/</a>	Shingle Bank, MInster-on-Sea, ME12 2TE
Roy Shepherd Discovering Fossils	N/A	<a href="http://www.discoveringfossils.co.uk/isle_of_sheppey_fossils.htm">http://www.discoveringfossils.co.uk/isle_of_sheppey_fossils.htm</a>	N/A
Sheppey Fossils	N/A	<a href="http://www.sheppeyfossils.com/home.htm">http://www.sheppeyfossils.com/home.htm</a>	N/A
Coin Castle	01795 510254	N/A	37 The Promenade, Leysdown, ME12 4PX
Playtime Amusements	01795 510357	N/A	21 The Promenade, Leysdown, ME12 4PX
Mr G's Amusements	01795 510096	N/A	Phase 1-2 The Promenade, Leysdown, ME12 4QB
Cain's Amusements	01795 662037	N/A	11 Neptune Terrace, Sheerness, ME12 2AW

# Food & Drink

Name	Telephone	Website	Address
The Ferry House Inn	01795 510214	<a href="http://www.theferryhouseinn.co.uk/">http://www.theferryhouseinn.co.uk/</a>	Harty Ferry Road, Harty, ME12 4BQ
Boat House Cafe at Barton's Point	07909 994196	<a href="http://www.bartonspointcoastal-park.co.uk/">http://www.bartonspointcoastal-park.co.uk/</a>	Marine Parade, Sheerness, ME12 2BX
The Retreat Cafe	N/A	N/A	Shellness Road, Leysdown-on-sea, ME12 4RH

Name	Telephone	Website	Address
The Shurland Hotel	01795 881100	<a href="http://www.theshurlandhotel.co.uk">http://www.theshurlandhotel.co.uk</a>	79-81 High Street, Eastchurch, ME12 4EH
Corrigan's	01795 511126	N/A	60-64 Leysdown Road, Leysdown-on-Sea, ME12 4RE
Muswell Manor	01795 510245	<a href="http://www.muswellmanor.co.uk">http://www.muswellmanor.co.uk</a>	Shellness Road, Leysdown-on-sea ME12 4RJ
Castle Connections	01795 661277	<a href="http://www.castleconnections.co.uk">www.castleconnections.co.uk</a>	Railway Terrace, Queenborough, ME11 5AY
Captain Crimps	01795 664209	N/A	South Street, Queenborough, ME11 5AA
Flynn's Bee Farm	01795 874935	<a href="http://www.flynnsbeefarm.co.uk/">http://www.flynnsbeefarm.co.uk/</a>	Elmley Road, Brambledown, ME12 3SS

## Shopping

Name	Telephone	Website	Address
The Drug Store	N/A	N/A	The Promenade, Leysdown, ME12 4QB
EML Angling	01795 669222	<a href="http://emlangling.co.uk/">http://emlangling.co.uk/</a>	198 High Street, Sheerness, ME12 1UQ
M&A Tackle	01795 581175	N/A	23 High Street, Sheerness, ME12 1NY

## General Information

Name	Telephone	Website	Address
Sheppey Greeters	N/A	<a href="http://www.visitkent.co.uk/greeters/">http://www.visitkent.co.uk/greeters/</a>	N/A
Sheppey History Website	N/A	<a href="http://www.sheppeywebsite.co.uk">http://www.sheppeywebsite.co.uk</a>	N/A
Leysdown-on-Sea	N/A	<a href="http://www.leysdownonsea.com/">http://www.leysdownonsea.com/</a>	N/A
Visit Sheppey	N/A	<a href="http://www.visitsheppey.com">http://www.visitsheppey.com</a>	N/A
Visit Swale	N/A	<a href="http://www.visit.swale.gov.uk">http://www.visit.swale.gov.uk</a>	N/A
Visit Kent	N/A	<a href="http://www.visitkent.co.uk">http://www.visitkent.co.uk</a>	N/A

# For more on The Isle of Sheppey

and across Kent...

Active

Heritage

Outdoors

Pick n' Mix

[www.visitkent.co.uk](http://www.visitkent.co.uk)



Supported by:



Designed and Developed by Hidden Britain [www.hiddenbritainse.org.uk](http://www.hiddenbritainse.org.uk)